



FEATURES:

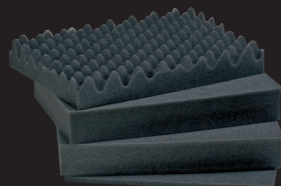
- 1. REINFORCED CORNERS
2. SINGLE BLOCK O-RING SEAL
3. REMOVABLE LID (on certain models)
4. CORROSION PROOF METAL PINS
5. UNIQUE COPOLYMER PP INJECTION MOLDED BODY
6. SELF OILING WHEELS (on certain mod.)
7. ERGONOMICALLY DESIGNED HANDLE
8. PRESSURE RELEASE VALVE
9. CUSTOMIZABLE NAME TAG
** 10. PRECUBED FOAM LAYERS
** 11. CONVOLUTED FORM IN THE LID
12. PADLOCK POINTS WITH METAL REINFORCEMENT (on certain models)
13. SECURE EASY TO OPEN LATCHES
14. POSITIVE STACKING LOCATION



STANDARD COLORS



* Not all available on all models. Please refer to the summary table of each model



PRECUBED FOAM

STANDARD MODELS AVAILABLE EMPTY OR WITH LAYERS OF PRECUBED FOAM IN THE BOTTOM AND CONVOLUTED FOAM IN THE LID. CUSTOM FOAMS ON DEMAND.

** Referred to all models equipped with precubed foam



ARMORY CONFIGURATIONS AVAILABLE FOR THE MOST POPULAR WEAPONS



HEAVY DUTY PADDED GUNBAGS AVAILABLE FOR ALL GUNCASE SIZES



OPTIONAL BACKPACK HARNESS TURNS THE CASE INTO A BACKPACK (certain models)



INTERNAL SLOTS FOR PLASTIC OR METAL BRACKETS



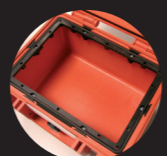
OPTIONAL DIVIDER BAGS AND ORGANIZED POUCHES



TSA APPROVED COMBI PADLOCKS



OPTIONAL DIVIDERS WITH ADJUSTABLE PARTITIONS



USER FRIENDLY PANEL FRAMES



CUSTOM FOAM POSSIBLE FOR ALL SIZES



CUSTOM PRINTINGS AVAILABLE



INTELU RESPOND The free App that allows for personal inventory and control of the content



HEAVENLY LIGHT The new standard for lightweight cases with no compromise on durability and reliability. Featuring an improved strength and over 30% less weight.

TECHNICAL SPECIFICATIONS

Table with columns for Case Model, Colors, Removal, Wheels, Internal Config, Weight, Buoyancy, Volume, and Dimensions. Lists various Explorer case models and their specifications.

Nato Stock Numbers (NSN) available on demand.

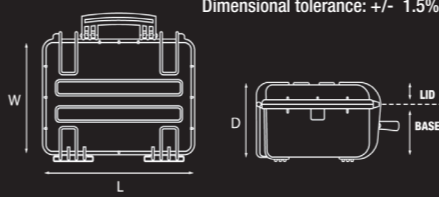
* Maximum load capacity when content is evenly distributed while maintaining buoyancy level just below the lid closure line. ** For models 4825HL, 5122, 5822, 5823 and 5833 the internal dimensions given are calculated on the deepest bottom area.

Dimensional tolerance: +/- 1.5%

Distributed by... [Logo]



GT LINE srl - Via del Lavoro, 9 - Loc. Crespellano 40053 Valsamoggia (Bo) - Italy Tel. +39 051 65041 - Fax +39 051 734925 www.explorercases.com - sales@explorercases.com



REG. N. 1594-A UNI EN ISO 9001:2015

EXPLORER CASES





1908
Int. Dim. 190x125x85 mm.
7 1/2 x 4 15/16 x 3 3/8 in



1913
Int. Dim. 190x125x135 mm.
7 1/2 x 4 15/16 x 5 5/16 in



2209
Int. Dim. 220x160x95 mm.
8 11/16 x 6 5/16 x 3 3/4 in



2214
Int. Dim. 220x160x145 mm.
8 11/16 x 6 5/16 x 5 11/16 in



2712
Int. Dim. 276x200x120 mm.
10 7/8 x 7 7/8 x 4 3/4 in



2712HL
Int. Dim. 276x200x120 mm.
10 7/8 x 7 7/8 x 4 3/4 in



2717
Int. Dim. 276x200x170 mm.
10 7/8 x 7 7/8 x 6 11/16 in



2717HL
Int. Dim. 276x200x170 mm.
10 7/8 x 7 7/8 x 6 11/16 in



3005
Int. Dim. 300x210x58 mm.
11 13/16 x 8 1/4 x 2 5/16 in



3317
Int. Dim. 330x234x170 mm.
13 x 9 3/16 x 6 11/16 in



3317HL
Int. Dim. 330x234x170 mm.
13 x 9 3/16 x 6 11/16 in



3317W
Int. Dim. 330x350x170 mm.
13 x 13 3/4 x 6 11/16 in



3815HL
Int. Dim. 380x270x155 mm.
14 15/16 x 10 5/8 x 6 1/8 in



3818
Int. Dim. 380x270x180 mm.
14 15/16 x 10 5/8 x 7 1/16 in



3818HL
Int. Dim. 380x270x180 mm.
14 15/16 x 10 5/8 x 7 1/16 in



3823HL
Int. Dim. 380x270x230 mm.
14 15/16 x 10 5/8 x 9 1/16 in



4209HL
Int. Dim. 420x300x95 mm.
16 9/16 x 11 13/16 x 3 3/4 in



4216HL
Int. Dim. 420x300x160 mm.
16 9/16 x 11 13/16 x 6 5/16 in



4412
Int. Dim. 445x345x125 mm.
17 1/2 x 13 9/16 x 4 15/16 in



4412HL
Int. Dim. 445x345x125 mm.
17 1/2 x 13 9/16 x 4 15/16 in



4419
Int. Dim. 445x345x190 mm.
17 1/2 x 13 9/16 x 7 1/2 in



4419HL
Int. Dim. 445x345x190 mm.
17 1/2 x 13 9/16 x 7 1/2 in



4820
Int. Dim. 480x370x205 mm.
18 7/8 x 14 9/16 x 8 1/16 in



4820HL
Int. Dim. 480x370x205 mm.
18 7/8 x 14 9/16 x 8 1/16 in



4825HL
Int. Dim. 480x370x255 mm.
18 7/8 x 14 9/16 x 10 1/16 in



5140
Int. Dim. 581x381x455 mm.
22 7/8 x 15 x 17 15/16 in



5117
Int. Dim. 517x277x173 mm.
20 3/8 x 10 7/8 x 6 13/16 in



5122
Int. Dim. 517x277x217 mm.
20 3/8 x 10 7/8 x 8 9/16 in



5218HL
Int. Dim. 520x285x180 mm.
20 1/2 x 11 1/4 x 7 1/16 in



5221HL
Int. Dim. 520x285x205 mm.
20 1/2 x 11 1/4 x 8 1/16 in



5325
Int. Dim. 538x405x250 mm.
21 3/16 x 15 15/16 x 9 13/16 in



5326
Int. Dim. 538x405x250 mm.
21 3/16 x 15 15/16 x 9 13/16 in



5822
Int. Dim. 580x440x220 mm.
22 13/16 x 17 5/16 x 8 11/16 in



5823
Int. Dim. 580x440x220 mm.
22 13/16 x 17 5/16 x 8 11/16 in



5833
Int. Dim. 580x440x330 mm.
22 13/16 x 17 5/16 x 13 in



7626HL
Int. Dim. 763x399x260 mm.
30 1/16 x 15 11/16 x 10 1/4 in



7630
Int. Dim. 765x485x305 mm.
30 1/8 x 19 1/8 x 12 in



7635HL
Int. Dim. 763x399x350 mm.
30 1/16 x 15 11/16 x 13 3/4 in



7641
Int. Dim. 765x485x415 mm.
30 1/8 x 19 1/8 x 16 5/16 in



7726
Int. Dim. 770x580x265 mm.
30 5/16 x 22 13/16 x 10 7/16 in



7745
Int. Dim. 770x580x450 mm.
30 5/16 x 22 13/16 x 17 11/16 in



7814HL
Int. Dim. 780x350x145 mm.
30 11/16 x 13 3/4 x 5 11/16 in



9413
Int. Dim. 936x350x135 mm.
36 7/8 x 13 3/4 x 5 5/16 in



9433
Int. Dim. 936x350x330 mm.
36 7/8 x 13 3/4 x 13 in



11413
Int. Dim. 1136x350x135 mm.
44 3/4 x 13 3/4 x 5 5/16 in



13513
Int. Dim. 1350x350x135 mm.
53 1/8 x 13 3/4 x 5 5/16 in



13527
Int. Dim. 1350x350x272 mm.
53 1/8 x 13 3/4 x 10 11/16 in



10826
Int. Dim. 1080x620x260 mm.
42 1/2 x 24 7/16 x 10 1/4 in



10840
Int. Dim. 1080x620x400 mm.
42 1/2 x 24 7/16 x 15 3/4 in



WATERTIGHT



ULTRA LIGHT



INTERSTACKABLE



CORROSIONPROOF



TEMP RATING
-33°C/+90°C



SAND & DUST
PROOF



SHOCKPROOF



DESIGNED FOR
MILITARY USE



AIRTIGHT



GUARANTEED
PROTECTION