



HMI/IPC Control Enclosures Suspension Arm Systems

Perfect design for machine building. Sophisticated HMI/IPC control enclosures and suspension arm systems that enhance your machine. The perfect symbiosis of design, flexibility and technical sophistication.

profiPANEL / profiPLUS 50/70

Designer HMI/IPC control enclosures and suspension arm systems for modern machine building



Our passion is enclosures.



profiPANEL PPD 210
(Combi 150/60)

multiPANEL MPD 70

taraSMART

2 HMI/control enclosure series plus
3 suspension arm system models -
the perfect symbiosis of design
and technology.

Design is playing an increasingly important role in machine building. Our sophisticated product lines enable us to provide efficient solutions for modern machine building, from both a technical and design perspective.

profiPANEL Standard - the economic version of our HMI/control enclosure series, 90 mm deep. Four standard sizes are available at short notice. From page 6

profiPANEL - The modern HMI/control enclosure series available in 8 depths (from 60 to 300 mm). Attractive design featuring anodised aluminium profiles. Made to measure. From page 8

multiPANEL - our premium HMI/control enclosure series available in 2 depths (70 and 85 mm). Exclusive design featuring powder coated aluminium profiles with attractive stainless steel inlays. Made to measure. From page 15

profiPLUS 50/70 - our designer suspension arm system, combining design and technology in perfect symbiosis. Its appearance blends perfectly with the design of modern machinery. From page 28

taraSMART - the evolution of a classic: A modern, economic suspension arm system for modern machine building. The perfect symbiosis of technical design and technical sophistication. From page 50

profiPANEL / profiPANEL Standard

The economic HMI/control enclosure



profiPANEL PPD 90
with a built-in power
socket

profiPANEL PPD 150
(Combi 90/60) with desk 60

"The aim of the development of profiPANEL was to create an versatile and cost-efficient control enclosure with an attractive design, offering complete flexibility for every form of machine building as standard."

Matthias Rose

The key product features of profiPANEL Standard at a glance:

- Four standard sizes with locks and hinges (on the longer side) with a depth of 90 mm; suitable for panel PCs up to 21"
- Standard sizes make this the most economic version
- Shorter delivery times as components are held in stock
- Custom machining of the front plate to order
- Ingress protection to IP 65

The key product features of profiPANEL at a glance:

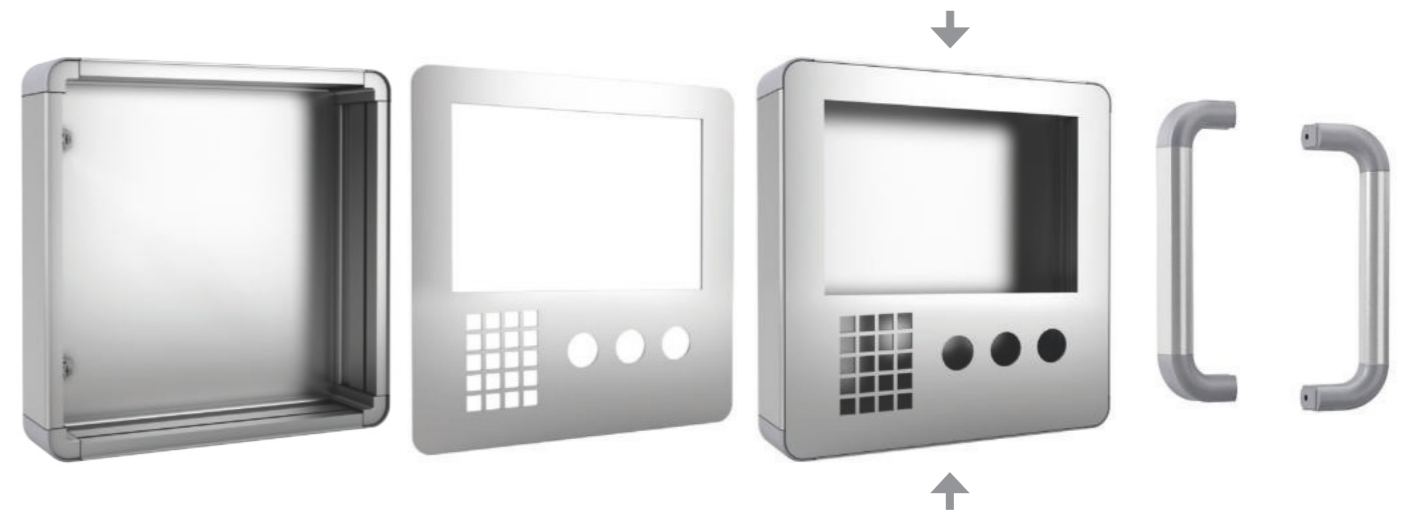
- Profile enclosure - made to measure
- Eight depths consisting of three basic profiles
- Minimalist design for modern machinery
- Custom machining of the front plate to order
- Hinged doors (with locks) for direct access inside (hinges on long side as standard)
- High-quality material: anodised extruded aluminium profiles
- Ingress protection to IP 65

profiPANEL Standard

The economic system in four standard sizes with a customised front plate that the customer can configure themselves



4 simple steps to a perfectly coordinated, economic control enclosure:



1: Choose an enclosure size based on the planned internal mountings*.

2: Specify the required front plate processing.

3: Define the position of the suspension arm mounting.

4: Select the optional profile handle(s). At the side or below the enclosure is possible.

The 90 mm cost-effective standard basic profile.

For everyone in a rush, or who requires only a small batch size, or who does not need millimetre-precise dimensions, we have developed the "profiPANEL Standard". Four standard sizes from a 90 mm basic profile with an individually configurable front plate into which every panel PC and additional buttons or switches can be incorporated. The hinged rear wall features locks and hinges on the longer sides.

The benefits of "profiPANEL Standard" at a glance:

- Four standard sizes to fit panel PCs up to 21"
- Standard sizes makes this the most economic model
- Shorter delivery times as components are held in stock
- Custom machining of the front plate on demand
- Coloured corners in traffic red, traffic blue or jet black at no extra cost (standard: light grey)
- Ingress protection to IP 65

profiPANEL Standard 10"-12"

331.090.AAA



For internal mounting of 10 to 12 inches*
Assignment space:
355 x 355 mm
External dimensions:
400 x 400 mm
Rear wall with locks and hinges

profiPANEL Standard 12"-15"

331.090.BBB



For internal mounting of 12 to 15 inches*
Assignment space:
355 x 475 mm
External dimensions:
400 x 520 mm
Rear wall with locks and hinges

profiPANEL Standard 15"-17"

331.090.CCC



For internal mounting of 15 to 17 inches*
Assignment space:
475 x 475 mm
External dimensions:
520 x 520 mm
Rear wall with locks and hinges

profiPANEL Standard 17"-21"

331.090.DDD



For internal mounting of 17 to 21 inches*
Assignment space:
475 x 555 mm
External dimensions:
520 x 600 mm
Rear wall with locks and hinges

* Note: The internal mounting sizes for panel PCs are intended only as a guideline figure as the manufacturer's air circulation values also need to be taken into consideration.

Three basic profiles, eight depths.

Thanks to the option of combining the three basic profile depths, profiPANEL enables a total of eight mounting depths to be realised (PPD 150 is available, as required, as a basic profile or as a profile combination consisting of a 90 mm and a 60 mm basic profile). The connection of a 60 or 90 mm deep desk (see next page) also offers additional options for extended internal mountings. Thanks to this wide range of depths, profiPANEL enables almost every conceivable configuration for the internal mounting of components to be realised. Each profiPANEL enclosure is made to measure. The design facilitates almost seamless, flush installation of the front plate, which is permanently mounted to the enclosure. Appropriate cut-outs for a display, switches and more are included in the service provided by ROLEC and are produced ex-works to meet customer specifications. The profiles can also be machined on request (e.g. USB, buttons, etc.).



PPD 60 Basic
This 60 mm basic profile is manufactured as standard with a flush door with locks and exterior hinges (as standard on the longer side). A fully bolted rear wall is available as an alternative.



PPD 150 Basic
This 150 mm deep basic profile enclosure is manufactured as standard with a flush door with locks and exterior hinges (as standard on the longer side). A fully bolted rear wall is available as an alternative.



PPD 210 (Combi 150/60)
This 210 mm deep enclosure consists of the combination of a 150 mm and a 60 mm basic profile. It features locks and exterior hinges.



PPD 90 Basic
This 90 mm basic profile enclosure is manufactured as standard with a flush door with locks and exterior hinges (as standard on the longer side). A fully bolted rear wall is available as an alternative.



PPD 150 (Combi 90/60)
This 150 mm deep enclosure consists of the combination of a 90 mm and a 60 mm basic profile. It features locks and exterior hinges.



PPD 240 (Combi 150/90)
This 240 mm deep enclosure consists of the combination of a 150 mm and a 90 mm basic profile. It features locks and exterior hinges.



PPD 120 (Combi 60/60)
This 120 mm deep enclosure consists of a combination of two 60 mm basic profiles. It features locks and exterior hinges.



PPD 180 (Combi 90/90)
This 180 mm deep enclosure consists of a combination of two 90 mm basic profiles. It features locks and exterior hinges.



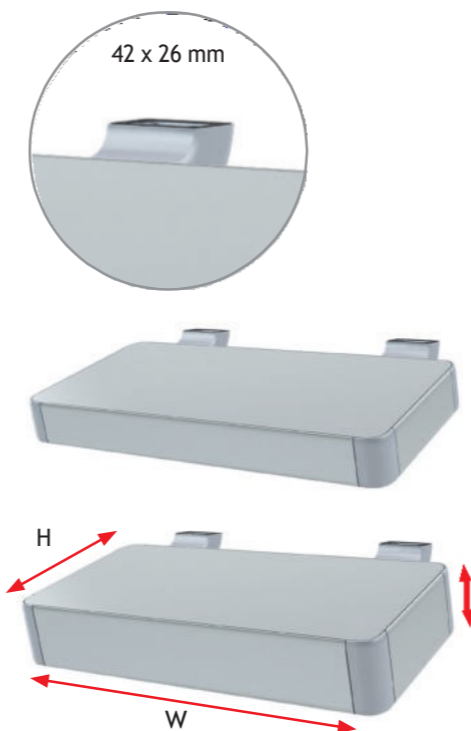
PPD 300 (Combi 150/150)
This 300 mm deep enclosure consists of a combination of two 150 mm basic profiles. It features locks and exterior hinges.



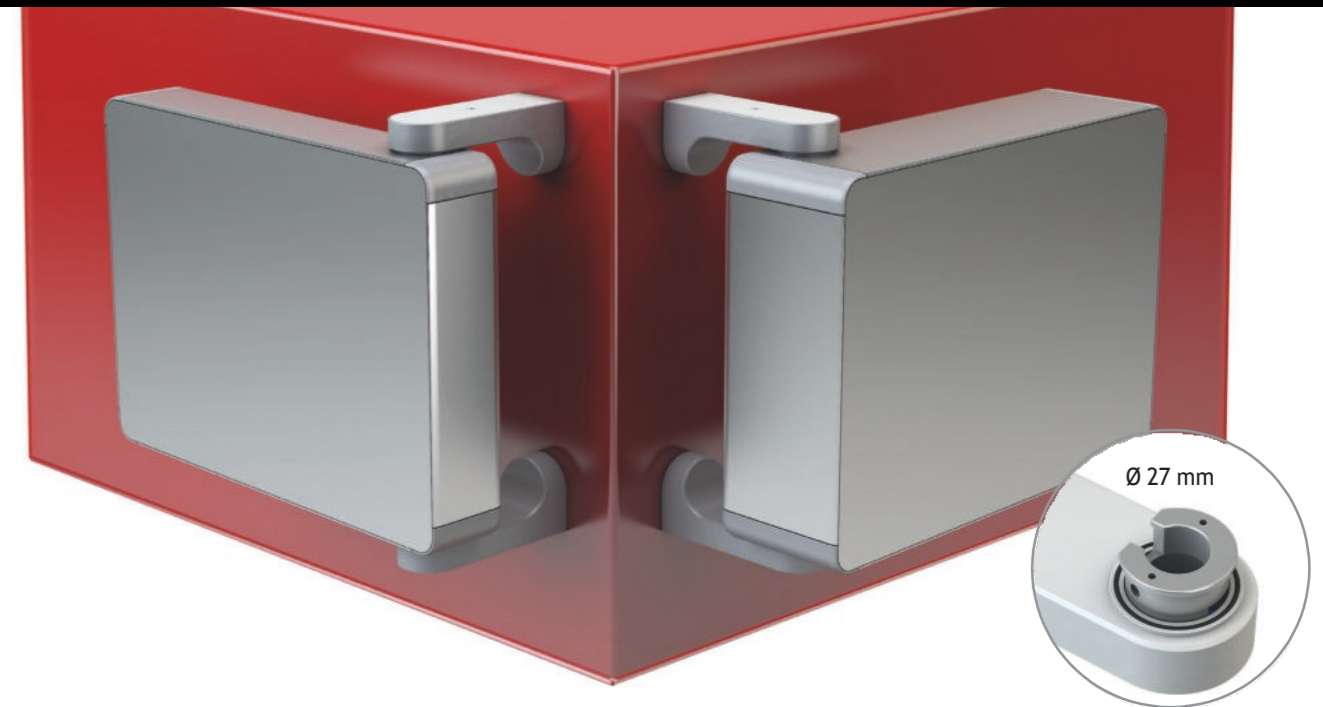
When you simply need more.

Sometimes specific applications need specific solutions. A desk is a clever solution when there's not enough space in the control enclosure or you need additional buttons. The profiPANEL series therefore includes two desk models, 60 and 90 mm deep (D), for internal mounting. The desk connection offers plenty of space (42 x 26 mm) for routing HDMI or DVI cables or network plugs.

The width (W) of the desk is automatically adapted to that of the control enclosure. The desk is 200 mm high (H) ex works. Non-standard dimensions are available on request. The rear wall of the desk is bolted on as standard.



The 60 and 90 mm desk versions are each fastened to the basic profile of the control enclosure with two desk connections. Holes are pre-drilled in the factory for fastening and for cable routing.



Everything under control with coordinated accessories.

With a 60 mm enclosure depth, profiPANEL is the ideal HMI/control enclosure for operators. An ergonomically designed profile handle system is available for even more convenient handling, particularly with the deeper profile versions.

Accessories also include a 450 mm wide latching keyboard holder, which can be enhanced and/or extended by an additional mouse holder.



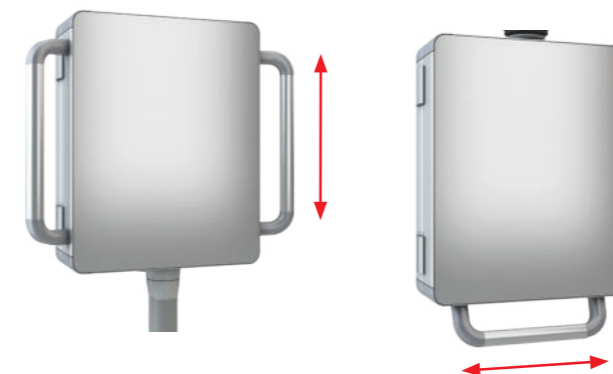
Practical: The 450 mm wide, latching keyboard holder and the matching mouse holder.



The keyboard holder can be easily adjusted. For optimum alignment of the keyboard and mouse holder.

The wall pivot mount with three options.

The practical wall pivot mount can rotate the enclosure through 138 degrees. It has adequate space (Ø 27 mm) for routing cables. It can be fixed, has a stop limit parallel to the wall and/or machine and can be fastened on the left or right side. It can also be used as a desk version. The maximum load-bearing capacity of the wall pivot mount is 20 kg. One bracket kit, three options.



Design, technology, feel - the profiPANEL handle system:

The designer profile handle system for profiPANEL control enclosures has been specially developed to establish harmony with the enclosure design and the ROLEC suspension arm systems. The profile handles are concave and therefore ergonomically shaped. For a perfect grip.

- For mounting on the side, under the enclosure or on the front of the desk
- Ergonomic shape - for a perfect feel
- Variable length (made to measure)
- Coating: PA corner pieces, similar to RAL 7035 light grey
Profile: anodised aluminium

profiPANEL

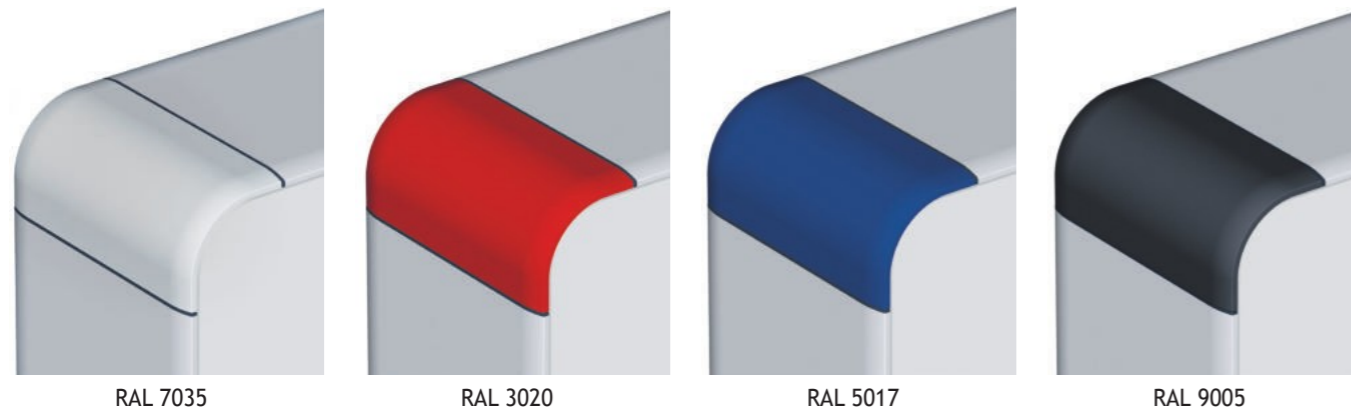
Alternative corner covers



Would you like a bit more colour?

As standard, the profiPANEL corner covers are delivered in RAL 7035 (light grey). A real eye-catcher in combination with the narrow sealing edge in RAL 7016 (anthracite grey). For everyone who wants things to be a bit more colourful, alternatively, the corner covers for all enclosure

depths are also available in the colours RAL 3020 (traffic red), 5017 (traffic blue) and 9005 (jet black) at the same price. For this, simply tick the desired colour in the enquiry form.



RAL 7035

RAL 3020

RAL 5017

RAL 9005

profiPANEL

Product overview

Type	Art. no.	Depth	Rear wall with hinge	Double-bit fastener	Bolted rear wall	Profile handle	Keyboard/mouse holder	Desk 60	Desk 90	Wall connection	Coloured corners
PPD 60 Basic	330.060.AAA	60	•	•	o	o	o	o			o
PPD 90 Basic	330.090.AAA	90	•	•	o	o	o	o	o	o	o
PPD 120 (Combi 60/60)	332.120.AAA	120		•		o	o	o			o
PPD 150 Basic	330.150.AAA	150	•	•	o	o	o	o	o	o	o
PPD 150 (Combi 90/60)	332.150.AAA	150		•		o	o	o	o		o
PPD 180 (Combi 90/90)	332.180.AAA	180		•		o	o	o	o		o
PPD 210 (Combi 150/60)	332.210.AAA	210		•		o	o	o	o		o
PPD 240 (Combi 150/90)	332.240.AAA	240		•		o	o	o	o		o
PPD 300 (Combi 150/150)	332.300.AAA	300		•		o	o	o	o		o

• Standard o Optionally available

The external dimensions of profiPANEL measure a minimum of 150x150 mm and a maximum of 800x800 mm. When ordering, it is possible to specify the front plate width and height, the installation size of the panel PC (from 7") or the exterior dimensions of the enclosure. Please also specify any desired accessories with your enquiry/order. Use our enquiry form at www.rolec.de in the download area of the profiPANEL product group.

Technical data

Enclosure/desk coating
Anodised silver

Front plate/desk coating
Anodised silver

Rear wall/desk coating
Anodised silver

Corner cover
PA, RAL 7035

Closure
Rear wall with locks and hinges

Ingress protection
Up to IP65 / EN 60529

Approvals
UL

OPTIONAL:

Coloured corner covers
PA, similar to RAL 3020, 5017 or 9005

Profile handle
Extruded aluminium profile with plastic connection
PA, similar to RAL 7035

Keyboard/mouse holder
Aluminium, powder coating, RAL 7035, light grey

Wall connection
Aluminium, powder coating, RAL 7035, light grey



Our passion is enclosures.



ROLEC
Gehäuse-Systeme GmbH
Kreuzbreite 2
D-31737 Rinteln

Phone +49 (0) 5751 4003-0
Fax +49 (0) 5751 4003-50
info@rolec.de
www.rolec.de

